

Hamina

Network Planner

**Design Wireless Networks,
from Wi-Fi to Private 4G/5G to IoT.
All in 3D, on your browser.**

Need to design some great wireless?

Need to figure out how many access points to buy, where to place them, how to align the antennas, what kind of coverage, performance and location tracking accuracy to expect? Perhaps also consider the kind of cabling, switching and power requirements? Create a customer report about all that? If so, read on.

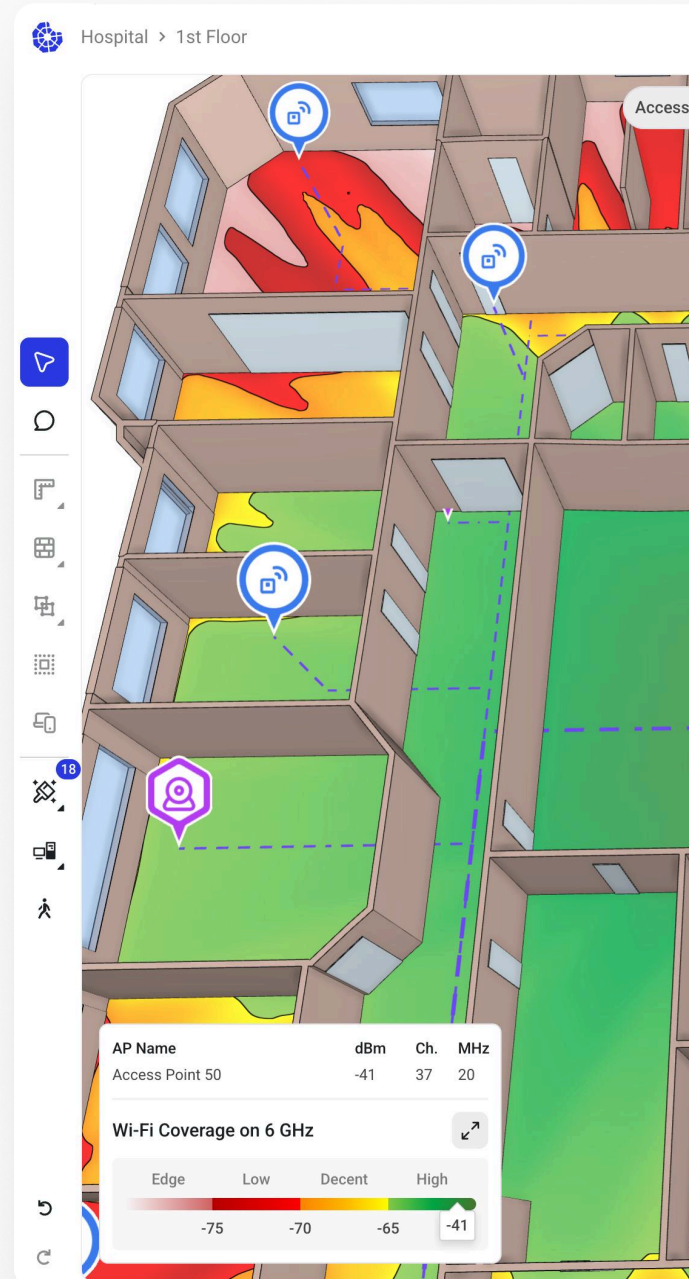
Wireless Design, Without Waiting

Design your Wi-Fi, private cellular, and IoT networks in 3D faster and easier than ever with Hamina's smooth, fully hardware-accelerated wireless network planner.

Upload and manipulate floor plans, draw walls, place access points and other network infrastructure. Heatmaps update in real-time as you move access points, while channels optimize instantly.

Hamina's building modeling tools, including wall-drawing, attenuating objects, and automatic wall detection make modeling fast and easy. Create beautiful interactive reports and share projects with team members.

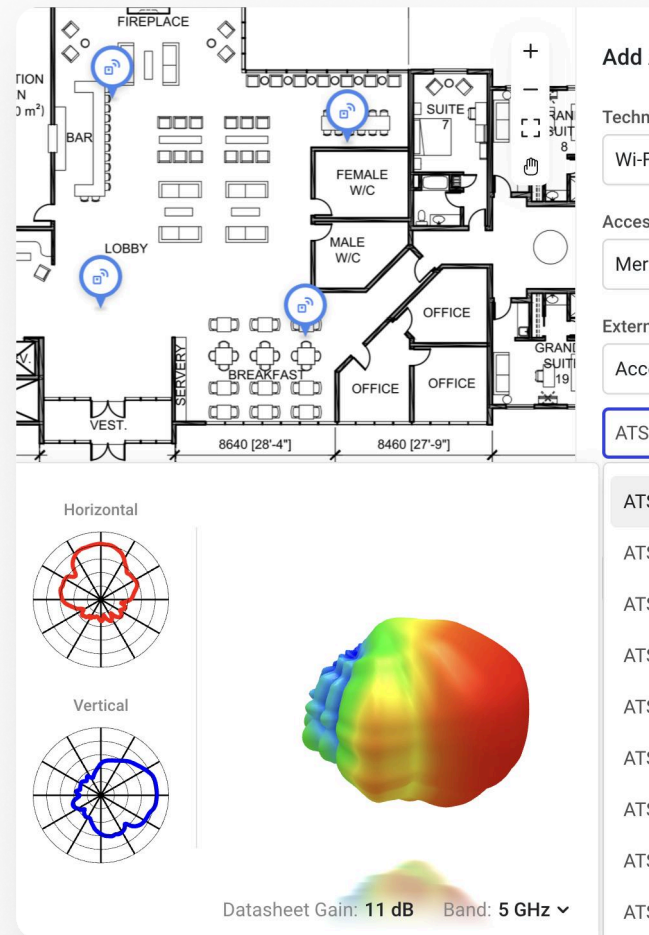
Everything runs directly in your web browser—no installation required. Get started in just 2 minutes.



Design all Enterprise Wireless.

Hamina Network Planner supports designing Wi-Fi and 4G/5G Private Cellular, Bluetooth location services planning & ZigBee and EnOcean design.

- **Full 3D network design** including multi-floor and a jaw-dropping, silky smooth 3D view.
- **Unique 3D antenna patterns** for all major enterprise Wi-Fi AP's, 4G/5G nodes and external antennas
- **Wi-Fi Visualizations:** Coverage, Secondary Coverage, Tertiary Coverage, SNR, Interference, and Data Rate
- **Private Cellular Visualizations:** Max RSRP, Secondary RSRP, Tertiary RSRP, SINR, throughput
- **Accurate analysis of BLE** (including location services), **Zigbee** and **EnOcean**.
- **High capacity planning** & analysis for Wi-Fi, 4G, 5G
- **Automatic channel planning** for Wi-Fi, and Private 4G/5G
- **Unique "Roaming Man"** client experience analysis
- **Wi-Fi 7 support. Cellular from 450 MHz to 6 GHz.** All **Zigbee** and **EnOcean** frequencies.

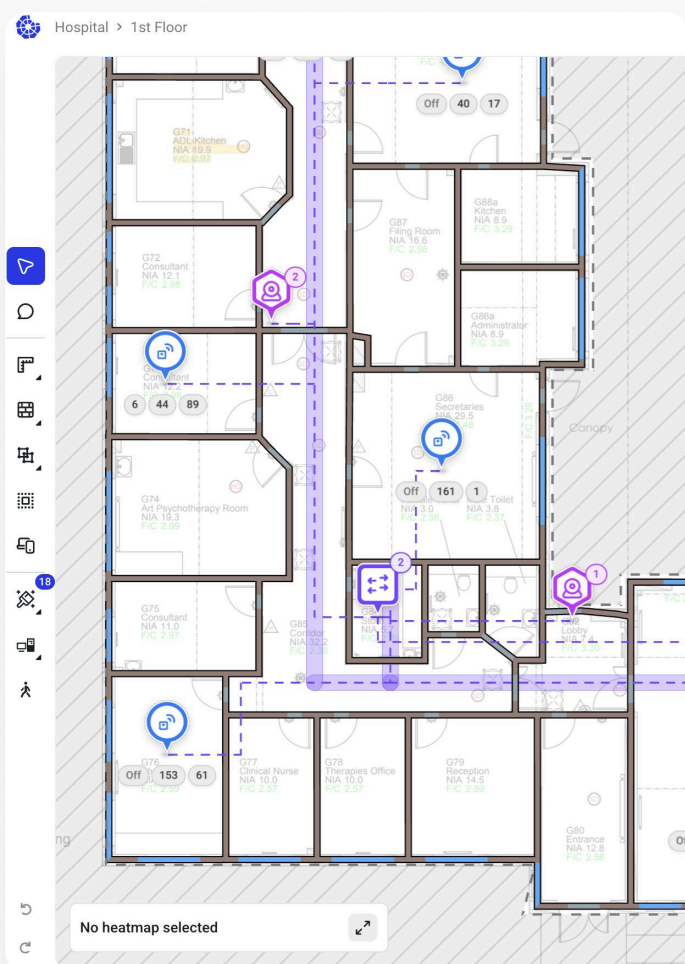


Floor plans, walls and objects: Once tedious, now a breeze.

Hamina Network Planner makes importing maps and walls easier than ever before! Extract walls from CAD and PDF files, or automatically trace walls on any indoor floorplan (beta), dramatically speeding up design time and eliminating tedious clicking.

- **Supported image types:** PDF, PNG, JPEG, GIF, BMP, SVG, WEBP
- **Support image types for PDF/CAD import:** DXF, DWG, layered PDF
- **Full 3D network design**, including adjustable wall heights, attenuating objects, access point heights, and antenna mounting orientations
- **Industry-leading multi-floor planning**, including floor-to-floor prediction, atriums, & sloped floors
- **Sloped floors and raised floors** allow designing complex environments, even stadiums!





You can't spell "Wireless" without "Wire"

You can't have a wireless network without wires, so Hamina Network Planner includes full wired planning capabilities. Place cable trays, switches, IDF's, MDF's, and routers with port counts, PoE availability and cabling automatically calculated. Account for wired client devices, such as security cameras and desk phones and see their impact to cabling and switching.

- Mappable **switch, router, IDF, and MDF** locations
- **Configurable switch hardware capabilities**, including port counts and PoE availability. Automatic warnings if running out of ports and power.
- **Automatic cable length calculation**, with warnings of overly-long cables.
- **Place wired PoE clients** such as desk phones, cameras, and sensors
- **Customize PoE client power needs** for each device type
- **Draw cable trays** for accurate cable routing and place **cable risers** to connect wiring through floors

Beautiful, Interactive, Customizable Reporting

WARNING:

Hamina's interactive, browser-based reporting experience may blow your customers' minds if they are used to legacy reports. 🤖

- **Create fully customized reports** with custom logos, titles, descriptions, and only the content you prefer to have there
- **Report templates** minimize the amount of repetitive report generation work.
- **Report reader** can simulate "walking there, using the network" with the unique **Client View** feature that mimics various wireless client devices
- Auto-created **Bill of Materials & Cabling Reports**
- **Share** web-based, automatically updated, fully interactive reports via web link
- Rich **PDF reports** generated with a single click

Signal Coverage

5 GHz

Here's the coverage of the strongest signal. Click on an AP to see signal per AP.

Pages

Summary

Bill of Materials

Project Notes

Notes and Zones

Wi-Fi

AP Placement

Signal Coverage

Secondary coverage

Tertiary coverage

SNR

Interference

Data Rate

AP List

Client view

BLE

AP Placement

Coverage

Secondary coverage

Tertiary coverage

Switching & Cabling

Switch & cabling loc

Wired device locatio

Cabling & Power De

Walrus Technologies

Bill of Materials

Here's the bill of Materials for the new Walrus Technologies Site. Customer requirements of one AP per Walrus pool have been accounted for.

TITLE	QUANTITY	DESCRIPTION
Wi-Fi Access Points	7	
Aruba AP-344	7	Indoor Wi-Fi 5 access point with external antenna connectors
• Wall mount	7	
Wi-Fi Antennas	7	
Acceltek ATS-OHDP-245-1011-4	7	Directional Wi-Fi antenna with 11dBi gain
4G/5G Access Points	7	
Airspan 1900	6	Indoor 4G/5G CBRS access point with integrated antenna
• Ceiling mount	6	
Airspan 1500	1	Indoor 4G/5G CBRS access point with

Benefits

- Accurately design Wi-Fi, 4G/5G private cellular and BLE networks
- Design and analyze in smooth 3D
- Automatically map out wired network needs, from PoE and port requirements to cable lengths
- Boost your workflow through one-click sharing of projects, and free version for project members who don't do wireless network design.
- Create beautiful, interactive reports
- Wireless is complex – tools shouldn't be. Hamina is efficient and easy to learn.
- Single-click network deployment through integration with leading networking vendors.
- Instant RF analysis of live network through integration with leading network vendors.

Features

- Supports **Wi-Fi 6E, 4G/5G Private Cellular (CBRS and 450MHz-6GHz), BLE (Bluetooth), EnOcean, ZigBee.**
- **Customizable wall types** and other objects, including attenuation, height and multi-floor
- Supports **all enterprise Wi-Fi** and many 4G/5G Private Cellular vendors
- Real-time coverage and performance heatmaps
- **Switch, IDF, and MDF planner**, including PoE & port budgeting and, cable trays, cable risers, and cable length tools
- **Wired client support** for inclusion in PoE, switch and cable planning (cameras, desk phones, etc.)
- **Full project sharing** with a free, read-only mode for unlicensed users
- Interactive, **browser-based reporting** with automatic bill of materials creation, one-click individual AP coverage, etc.
- **Browser based**, nothing to install. Auto-save.
- Cloud: Fully separated **US and EU instances**
- Industry-pioneering **API-based** integration with wireless vendors such as Cisco, Extreme, Juniper, Arista, Aruba

Pricing

Hamina Network Planner is available as per-user 6-month and 12-month subscriptions, in two different variations. The product can be purchased directly via Hamina.com – just sign up and click “Buy Now”. Credit card and invoice are accepted with online payments. To purchase “the traditional way”, contact sales@hamina.com.

Network Planner

\$590 / user for 6 months

Includes planning for Wi-Fi, BLE, ZigBee, EnOcean

Network Planner PLUS

\$980 / user for 6 months

Add private 4G / 5G planning, advanced 3D modeling (sloped and raised floors) and 3D visualization in reports.

Contact

More info:

[hamina.com](https://Hamina.com)

Support:

support@hamina.com

Sales:

sales@hamina.com

Twitter:

twitter.com/HaminaWireless

Linkedin:

linkedin.com/company/hamina-wireless/